

Using hydrogeophysical methods to constrain carbon distribution and fluxes in peat soils of the Everglades



Xavier Comas, William Wright, and Gerhard Heij

Department of Geosciences,
Florida Atlantic University, Davie, FL

FAU
FLORIDA ATLANTIC
UNIVERSITY

Outline:

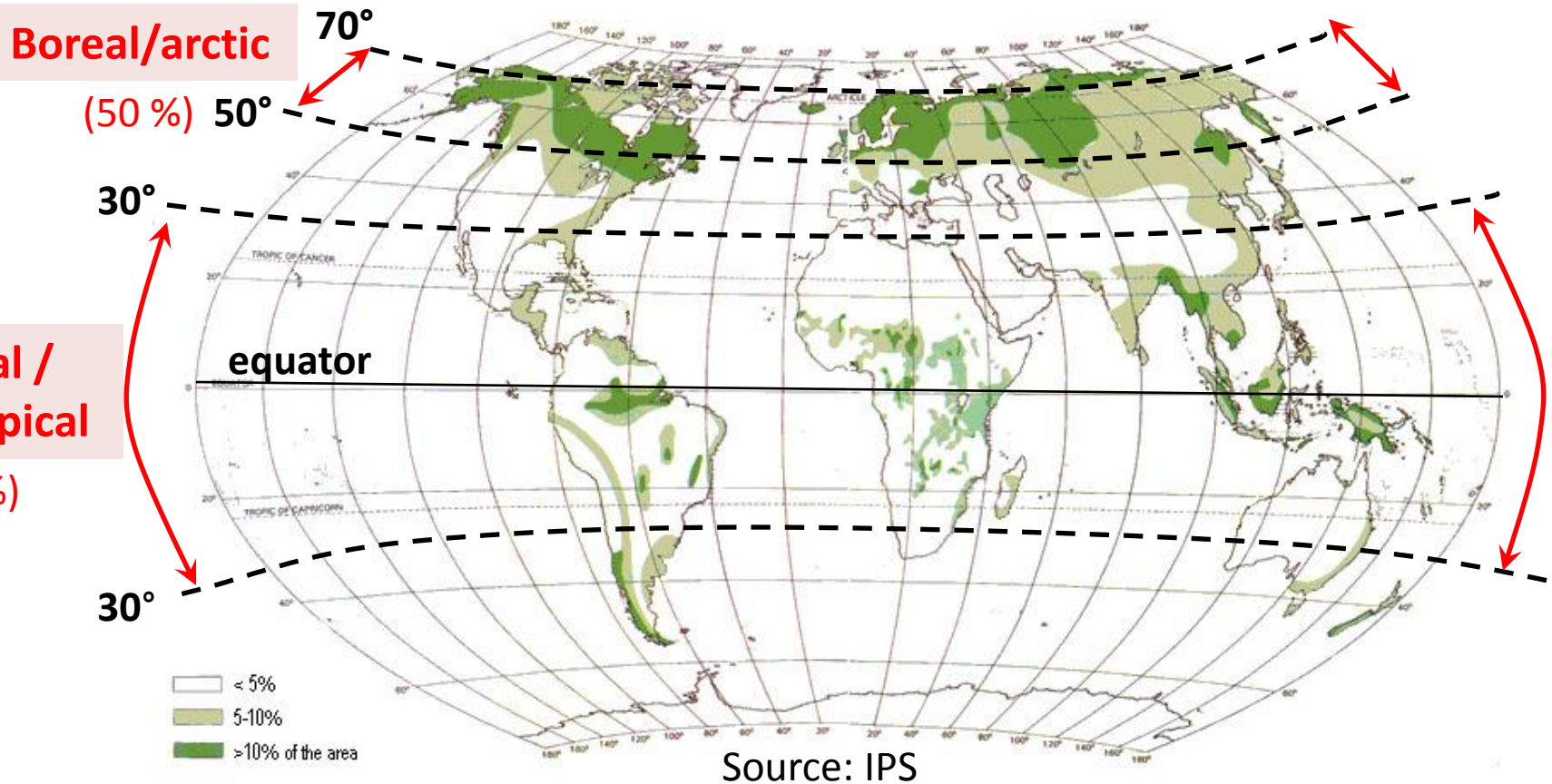
- 1. Introduction:
- 2. Methodology:
 - 2.1. Hydrogeophysical methods:
 - 2.1.1. Ground Penetrating Radar
 - 2.1.2. Capacitance moisture Probes
 - 2.3. Other methods
 - 2.3.1. Time-lapse cameras; gas traps
- 3. Results
 - 3.1. Characterization of peat thickness
 - 3.2. Biogenic gas dynamics
- 4) Conclusions
- 5) Future directions



1. Introduction

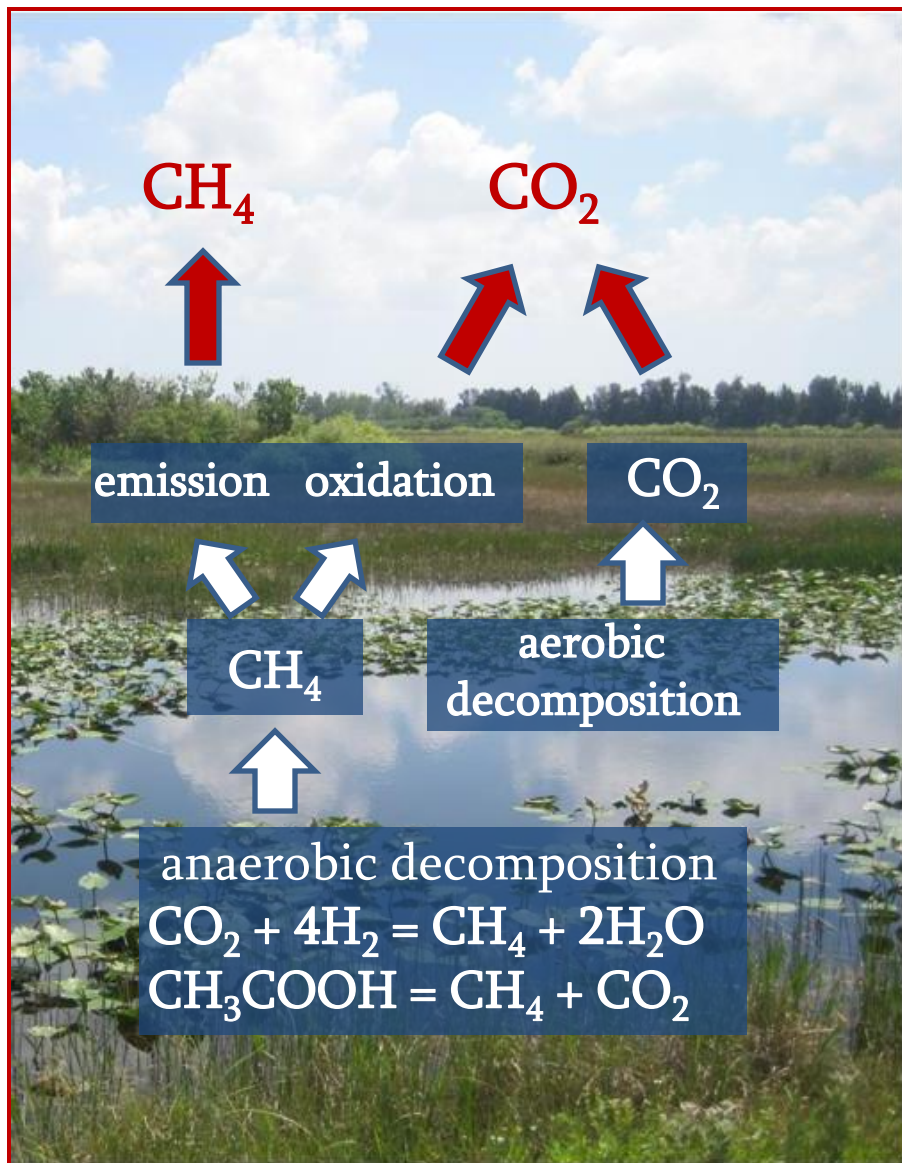


Peatland distribution in the World



- Total area \approx 6-8% of land surface
- Distribution roughly bimodal

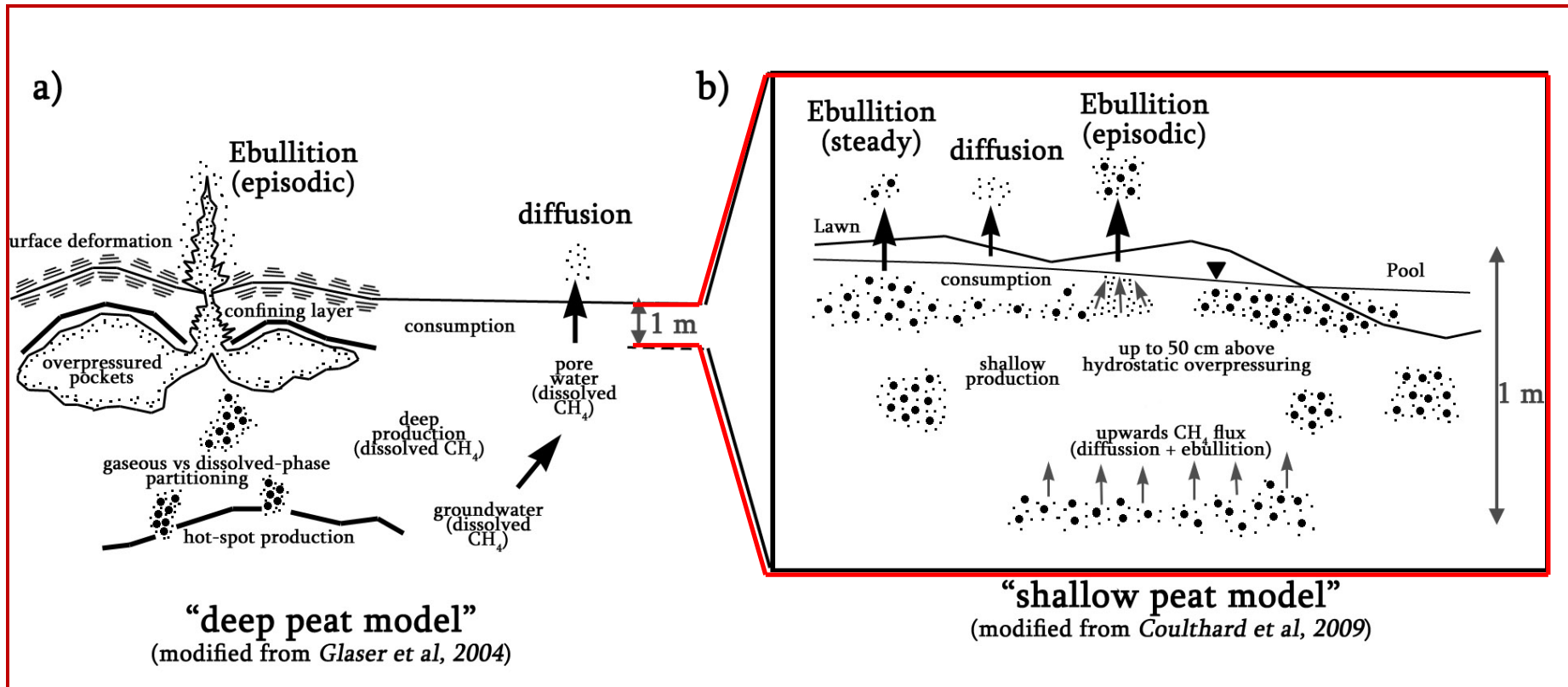
Motivation: Carbon cycling in peat soils



- Peat soils play a critical role in the global carbon (C) cycling. Act as:
- **C storage** (global) = 694-528 Pg C or 95-72% of total 730 Pg C held in atmosphere
- **C sources** of **greenhouse gases** to the atmosphere (mainly methane [CH_4] and carbon dioxide [CO_2])
- Many uncertainties in terms of:
 - Spatial distribution
 - Temporal distribution

Spatial distribution: current models for gas accumulation in peatlands

- Deep vs. shallow accumulations: based on *boreal systems*



Very uncertain for tropical/subtropical systems

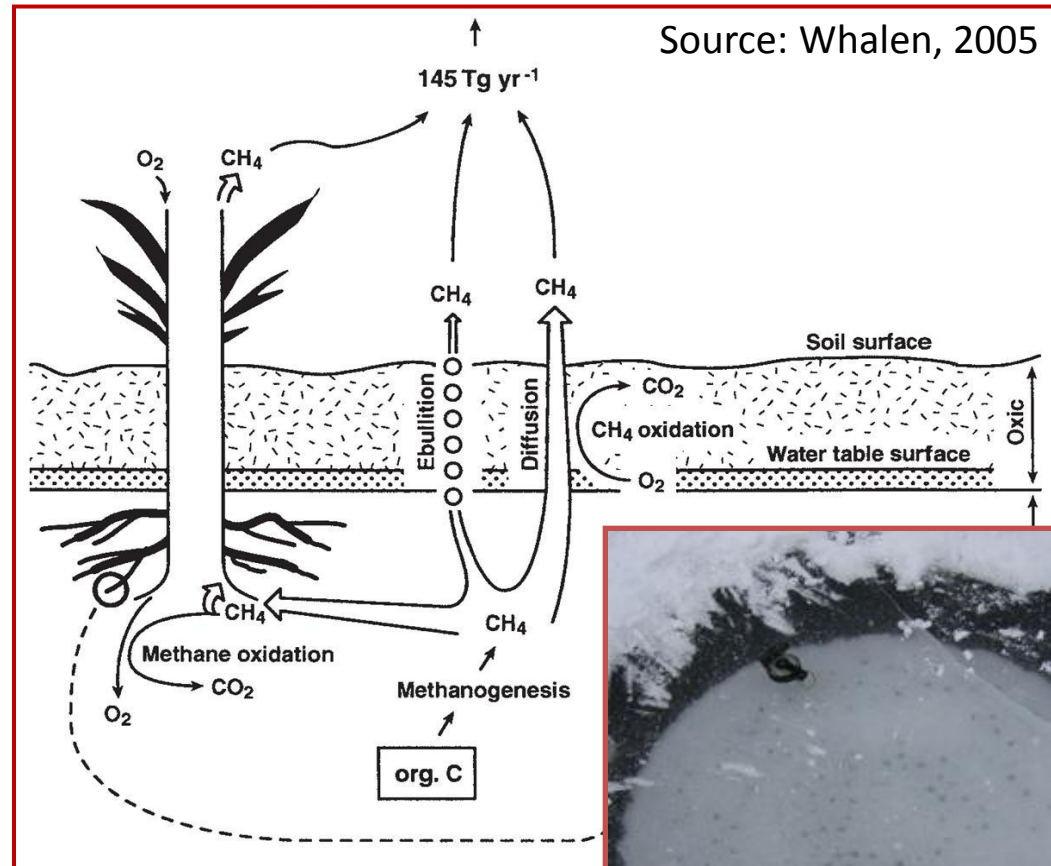
Temporal distribution: biogenic gas release from peatlands

Mechanisms:

- Diffusion
- Transport through vascular plants
- **Ebullition:**
 - Episodic vs. steady

Controls:

- Soil T
- Chemical composition (organic matter quality)
- Plant community structure
- Water table elevation (redox boundary)
- Atmospheric Pressure



Source: Comas et al, 2008

Gas fluxes from peatlands

- Boreal systems:

Mechanism	mg CH ₄ m ⁻² d ⁻¹	Study type	Location	Method	Reference
Episodic ebullition	2,780-2,070	Field based	ME	GPR	Comas et al, 2011
	2,450	Field based	MN	Hydraulic head	Rosenberry et al, 2003
	1,999-389	Field based	ME	GPR	Comas et al, 2008
	1,666 – 10	Field based	Canada	Chamber	Strack et al, 2004
	1,200	Lab based	ME	Chamber	Comas and Slater, 2007
	356	Field based	MN	Surface deformation	Glaser et al, 2004
	83 – 2.2	Lab scale	UK	TDR	Baird et al, 2004
Diffusive fluxes	480-1	Field based	MN	Chamber	Crill et al, 1998
	35	Field based	MN	Chamber	Chasar, 2002

- Wide array of methods with different spatial and temporal resolutions

- Tropical/subtropical systems:

Mechanism	mg CH ₄ m ⁻² d ⁻¹	Study type	Location	Method	Reference
Ebullition	912-146	Field based	Louisiana	Chamber	Alford et al, 1997
	263	Field based	FL	Chamber	Whiting and Chanton, 2001
	243	Field based	FL	Chamber	Hapell et al, 1993
	230-192	Field based	Amazon	Chamber	Barlett et al, 1988
Diffusive fluxes	53-44	Field based	Amazon	Gas filter correlation	Barlett et al, 1990
	52	Field based	FL	Chamber	Happell and Chanton, 1993

- Methods mainly based in chambers with more limited temporal and spatial resolution



- C stocks and spatial and temporal distribution of C gases have been better studied in boreal peatlands, while remaining much more uncertain for *subtropical systems (such as the Everglades)*
- Therefore, uncertain response to global warming and/or restoration efforts (i.e. change in water table elevation, water chemistry, etc)

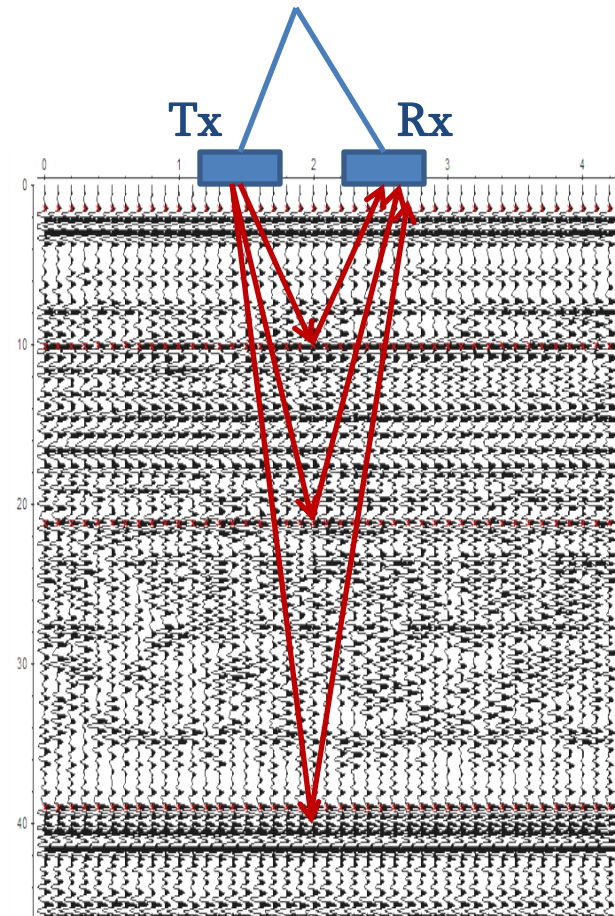
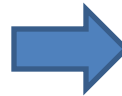
2. Methodology

2.1. Hydrogeophysical methods

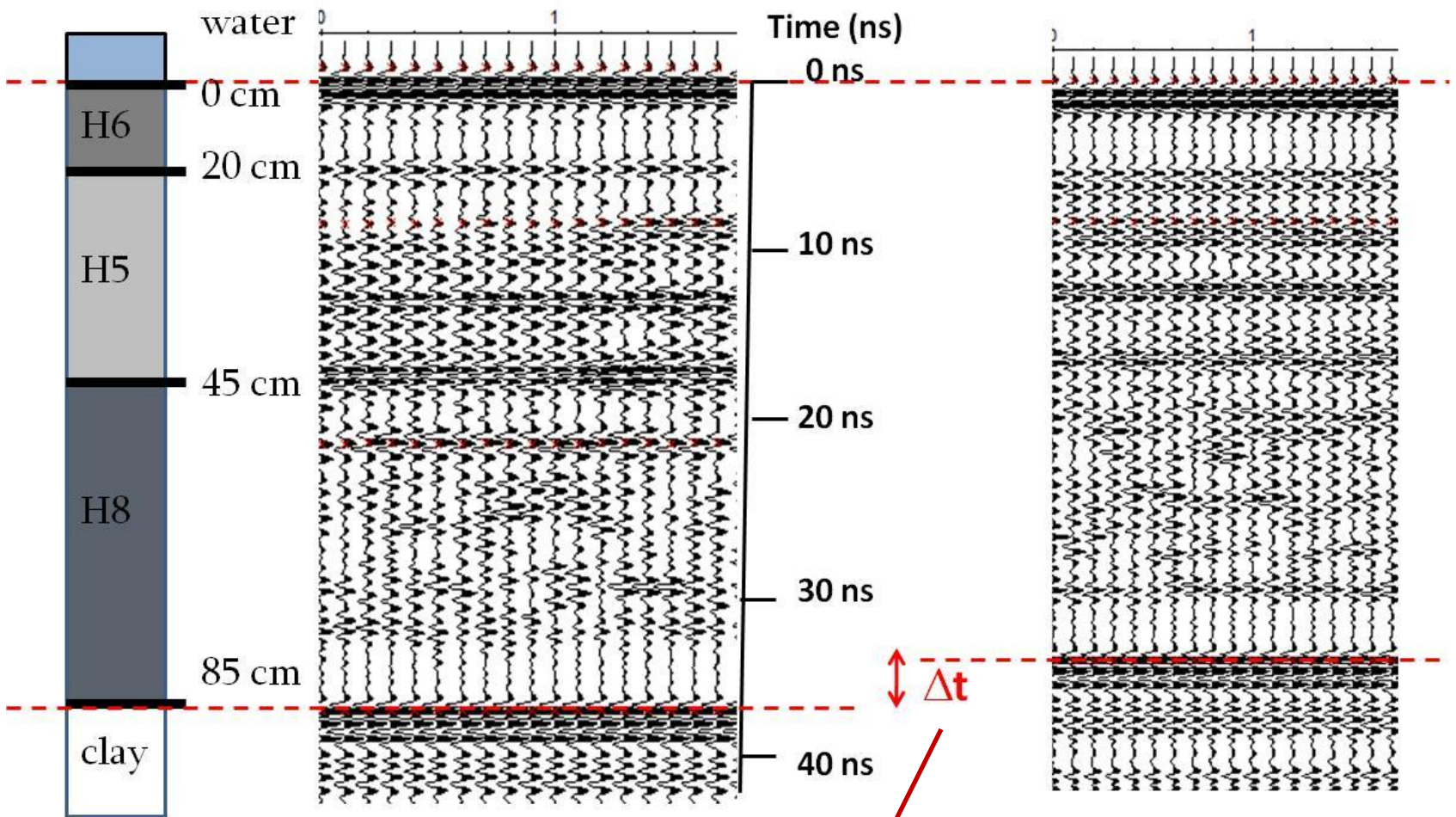


2.1.1. Ground Penetrating Radar (GPR)

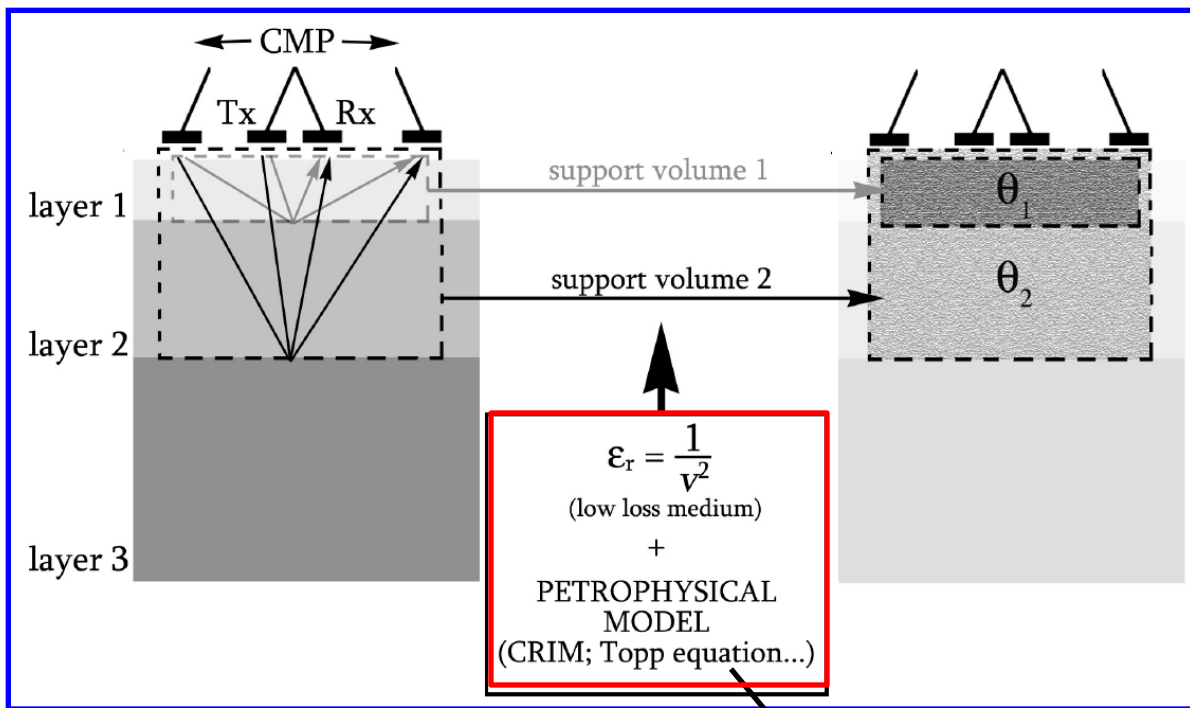
- Principle: a pulse of electromagnetic (EM) waves travels from a transmitter (**Tx**) to a receiver (**Rx**) antenna non-invasively
- Physical property measured: *relative dielectric permittivity* (ϵ_r)
- any contrast in ϵ_r (e.g. changes in water content) will return a reflection on the GPR record



- Very sensitive to changes in water content and thus gas content



Since depth to the mineral soil is constant, changes in time (Δt) are related to changes in water content (and thus air content) within the peat column



Slater and Comas, 2009

- Change in time over known depth is converted to velocity
- CRIM model is applied to express velocity in terms of **gas content**

Complex Refractive Index model (CRIM):

$$\epsilon_{r(b)}^\alpha = \theta \epsilon_{r(w)}^\alpha + (1 - n) \epsilon_{r(s)}^\alpha + (n - \theta) \epsilon_{r(a)}^\alpha$$

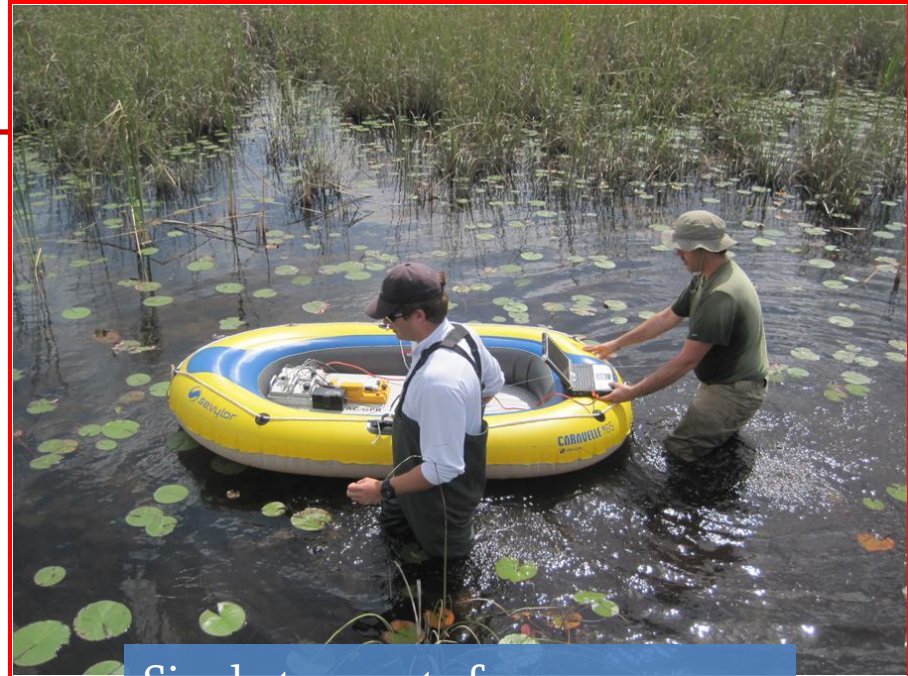
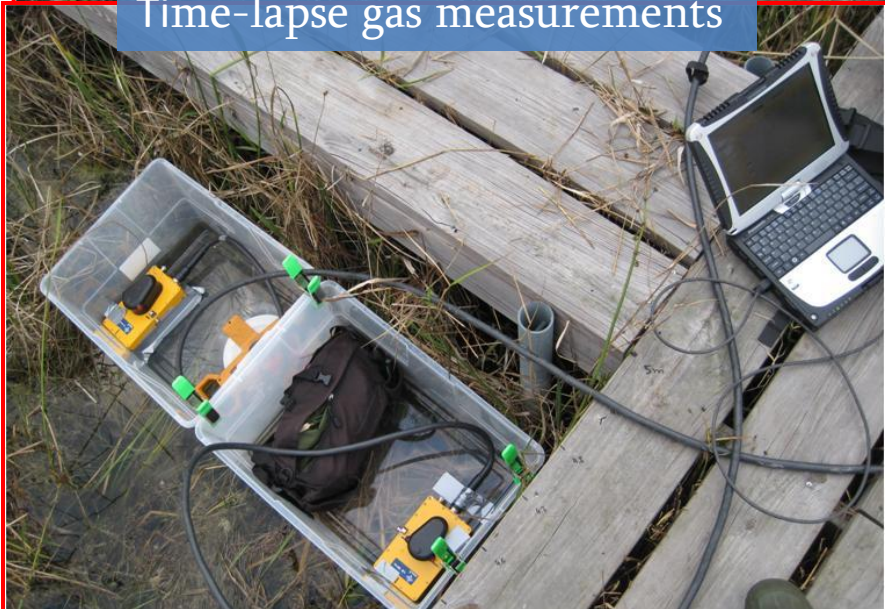
$\epsilon_{r(w)}$; $\epsilon_{r(a)}$; $\epsilon_{r(s)}$: relative dielectric permittivity of water (81), biogenic gas (1), and peat matrix; n : porosity, θ : volumetric soil water content and α : factor accounting for orientation of the electrical field

Gas content

GPR experimental setup: Field scale



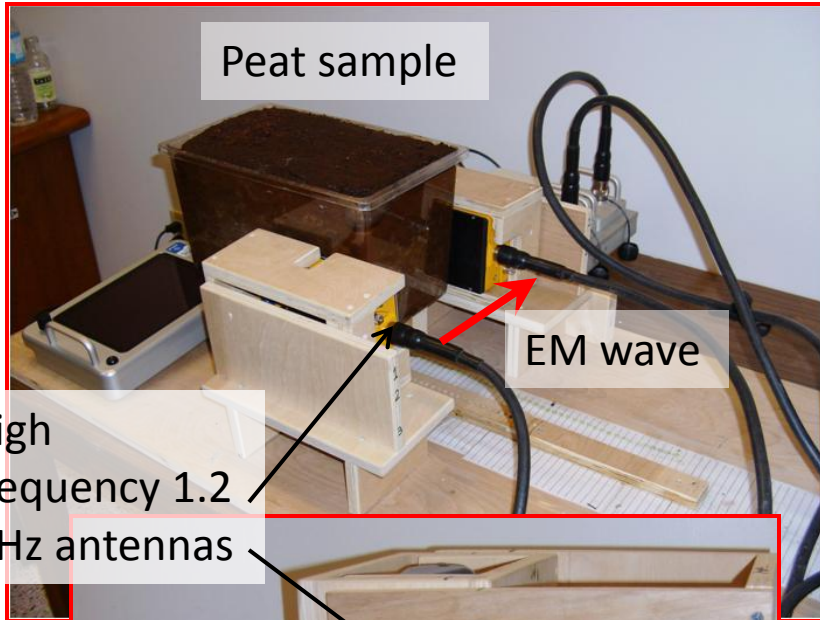
Time-lapse gas measurements



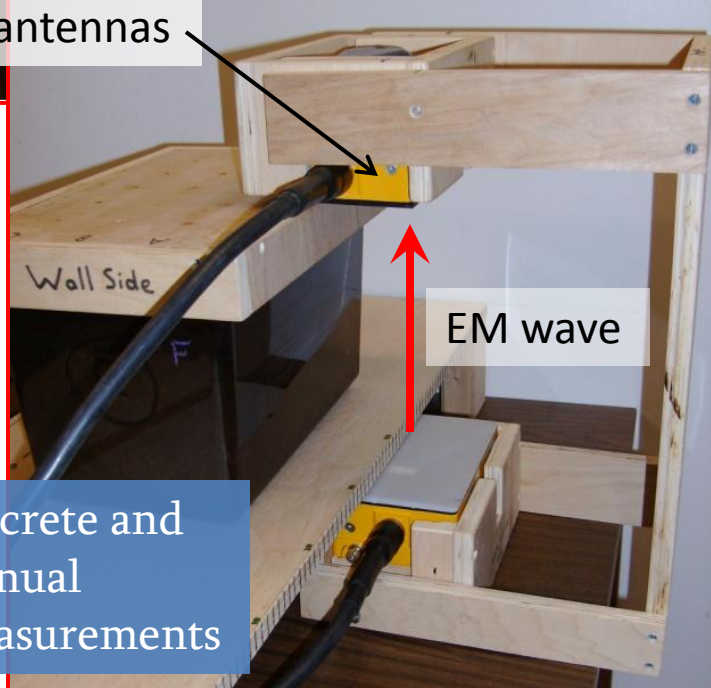
Single transects for stratigraphic characterization



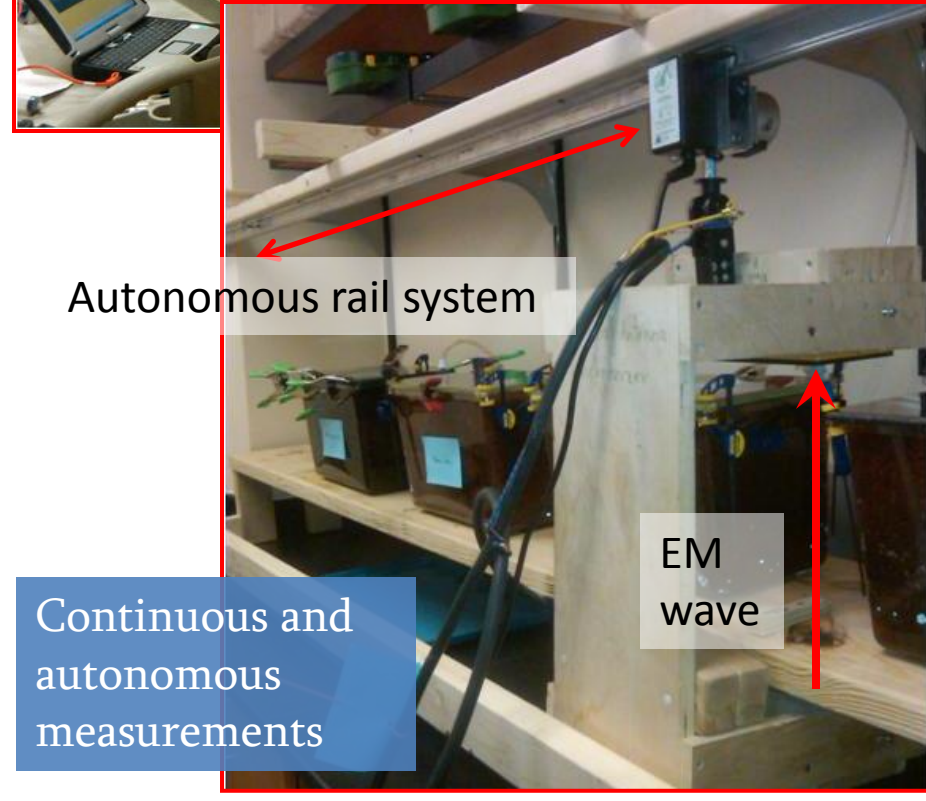
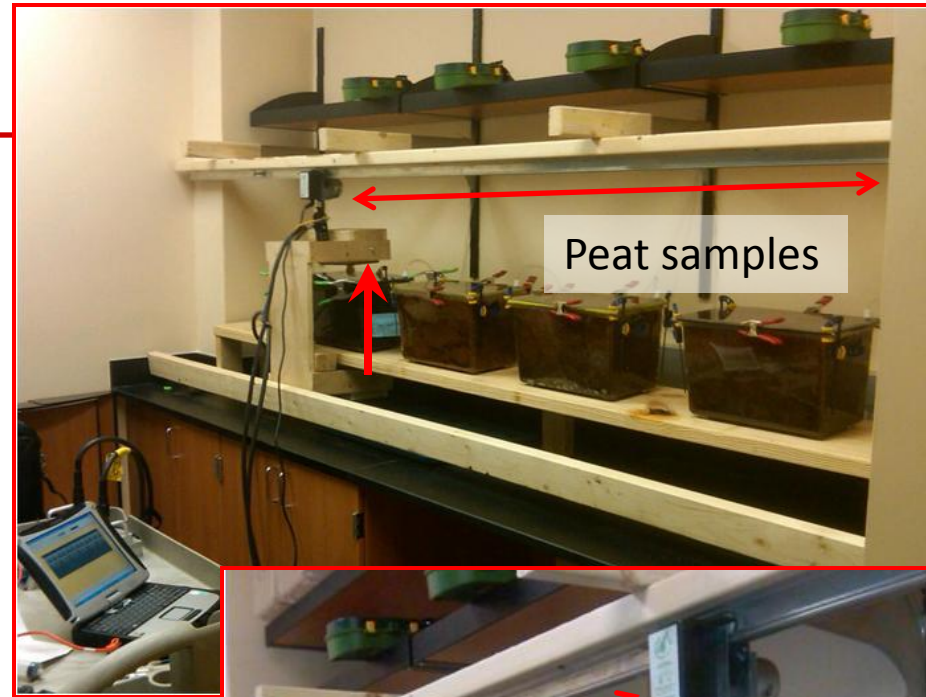
GPR experimental setup: Laboratory scale



High frequency 1.2 GHz antennas



Discrete and manual measurements



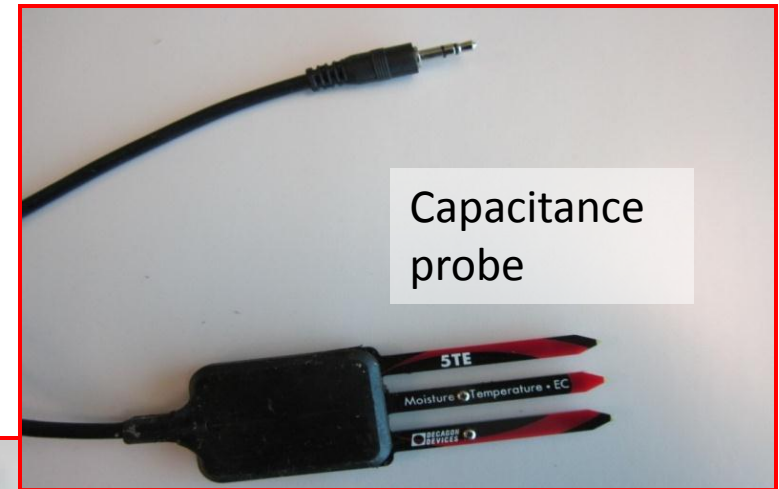
Autonomous rail system

Continuous and autonomous measurements

EM wave

2.1.2. Moisture probes

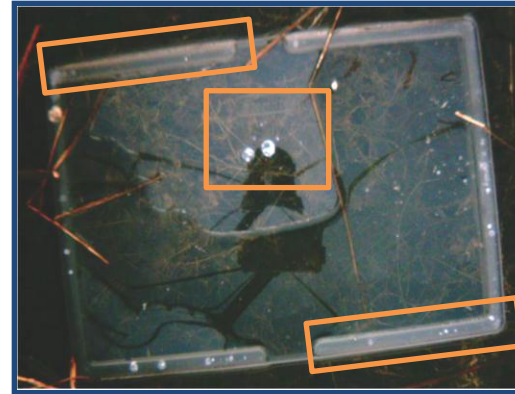
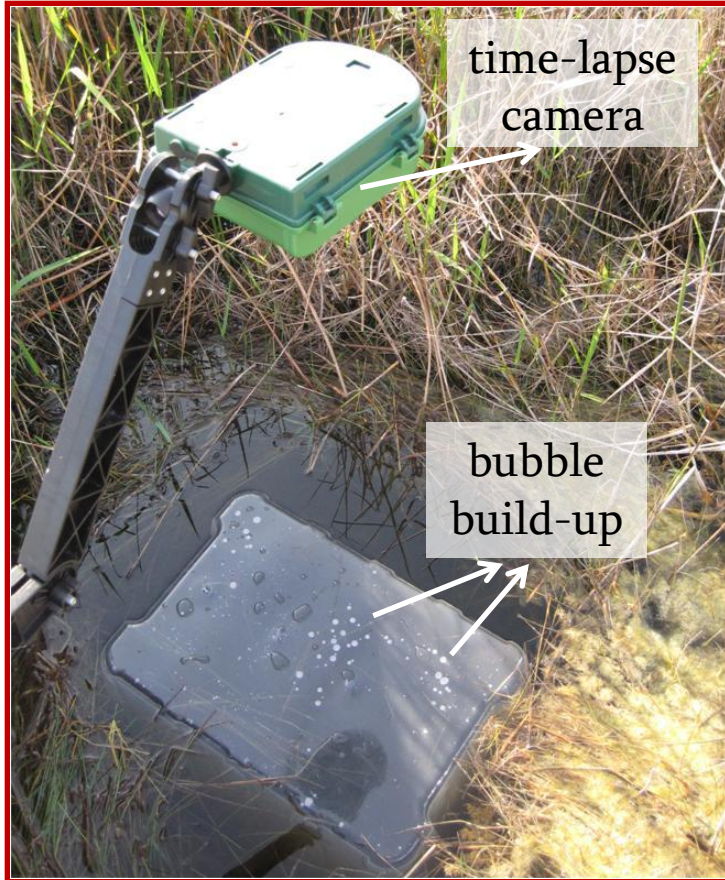
- Principle: uses *capacitance* (or ability to store an electrical charge) to measure dielectric permittivity
- Changes in capacitance due to changes in dielectric permittivity can be directly correlated with changes in water content and thus gas content
- Experimental setup: invasive; data logger allows for autonomous and continuous measurements



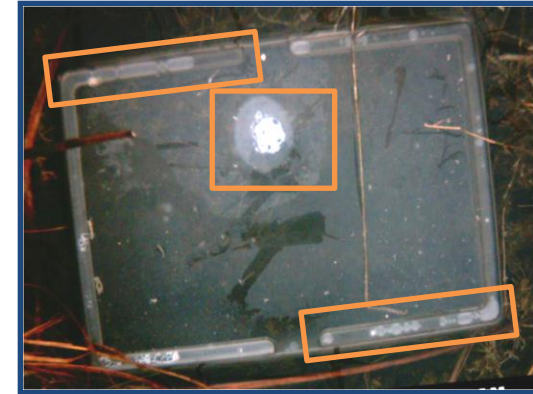
Moisture probes
inserted into soil

2.1.3. Other methods: time lapse gas cameras and traps

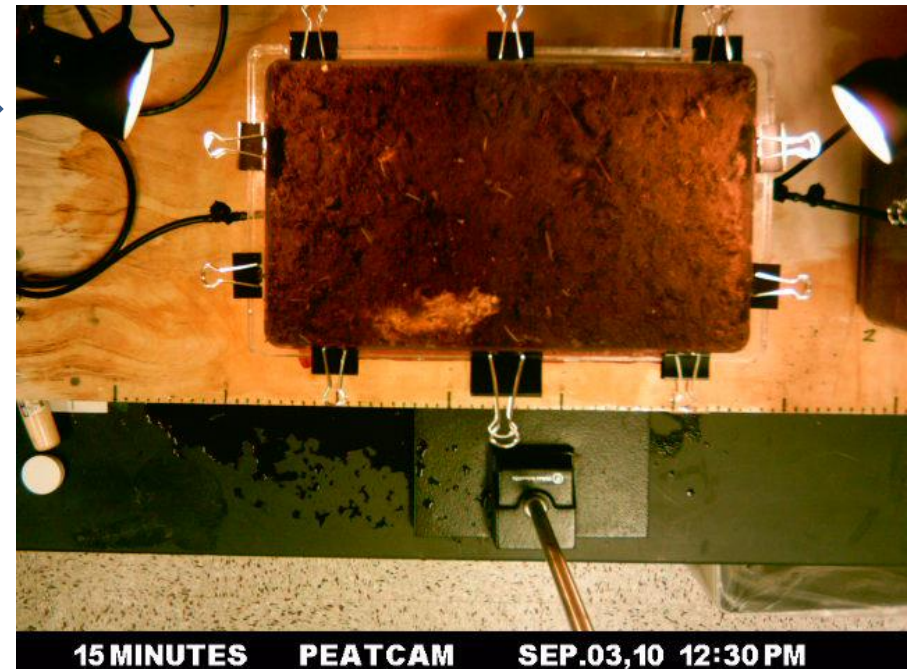
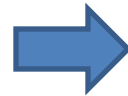
- Volume of bubble release directly measured over time



Feb 14, 2011 6:08AM

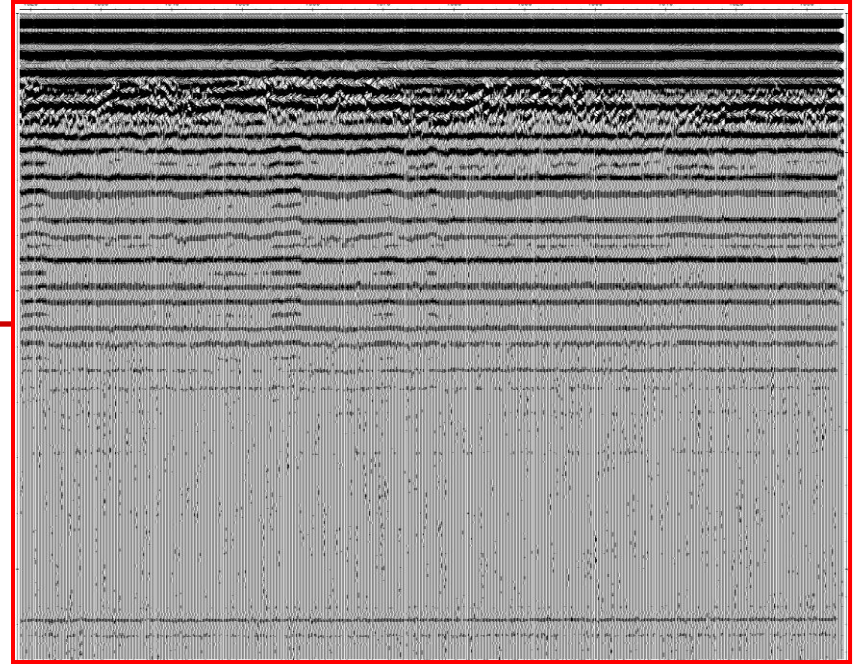


Feb 21, 2011 6:50AM

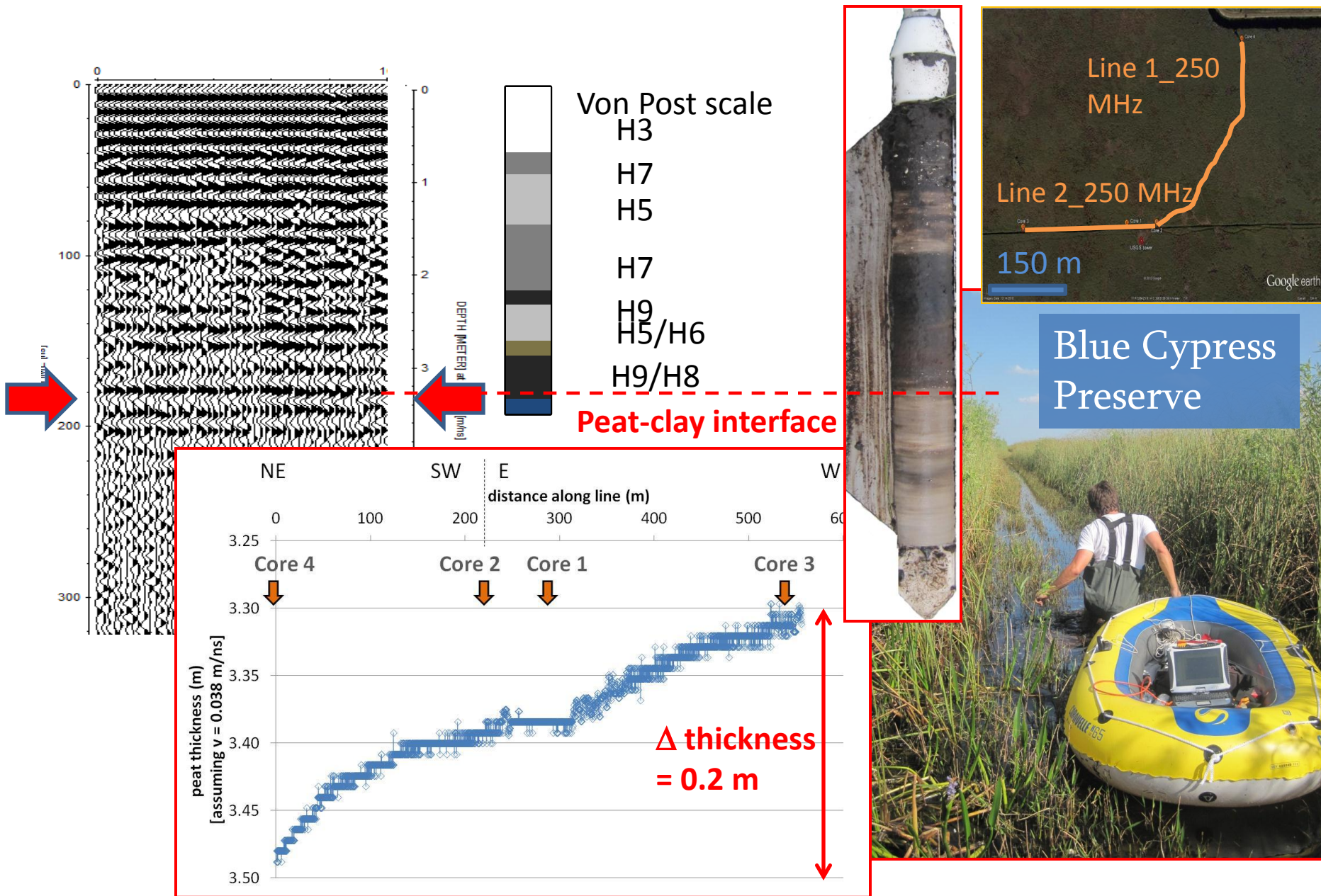


Comas, X. and Wright, W. 2012. Heterogeneity of biogenic gas ebullition in subtropical peat soils is revealed using time-lapse cameras, Water Resources Research, 48, W04601, doi:10.1029/2011WR011654

3. Results



3. 1. Characterization of peat thickness



3. 2. Biogenic gas dynamics

a) Internal gas dynamics: CH₄/CO₂ production vs. release

Release

Sample	event	gas lost		flux rate *		surface deformation (cm)
		(%)	(% day ⁻¹)	(mg CH ₄ m ⁻² day ⁻¹)	(mg CO ₂ m ⁻² day ⁻¹)	
WCA-1	1	1.42	0.12	119.56	54.80	-1.23
	2	1.00	0.09	91.88	42.11	-1.46
	3	0.60	0.04	43.46	19.92	-1.10
WCA-2	1	0.94	0.09	86.34	39.57	-0.96
	2	1.32	0.05	47.65	21.84	-0.94
	3	1.00	0.14	144.38	66.18	-0.34

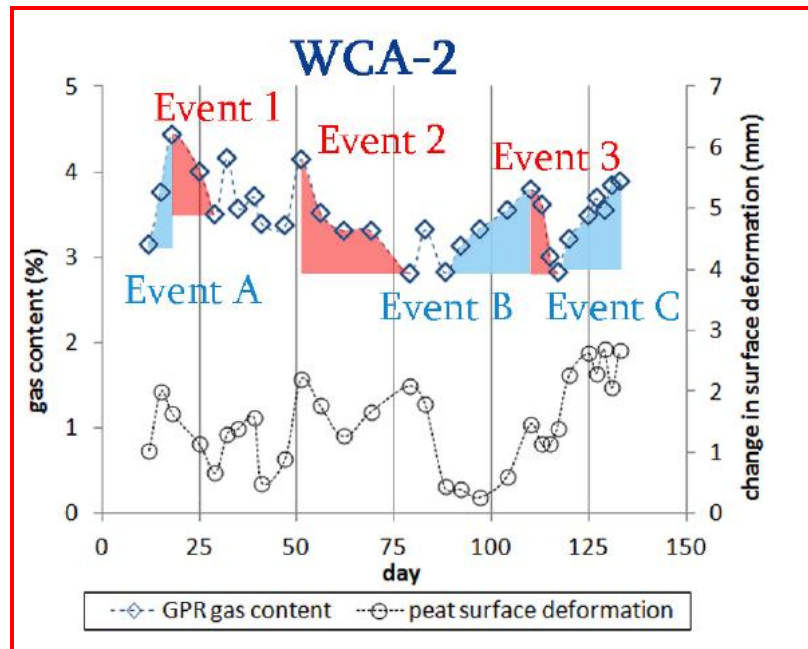
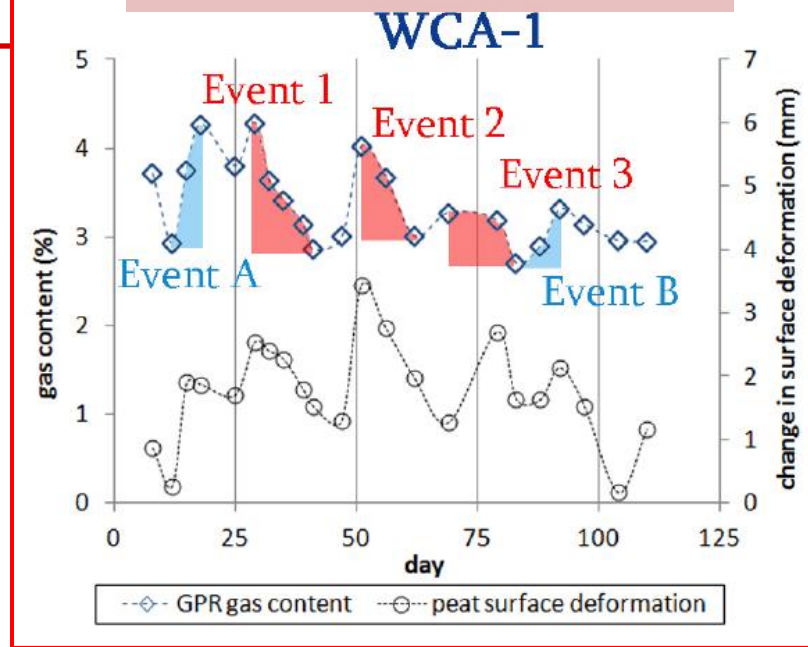
* assuming 60 % CH₄ and 10 % CO₂

Production

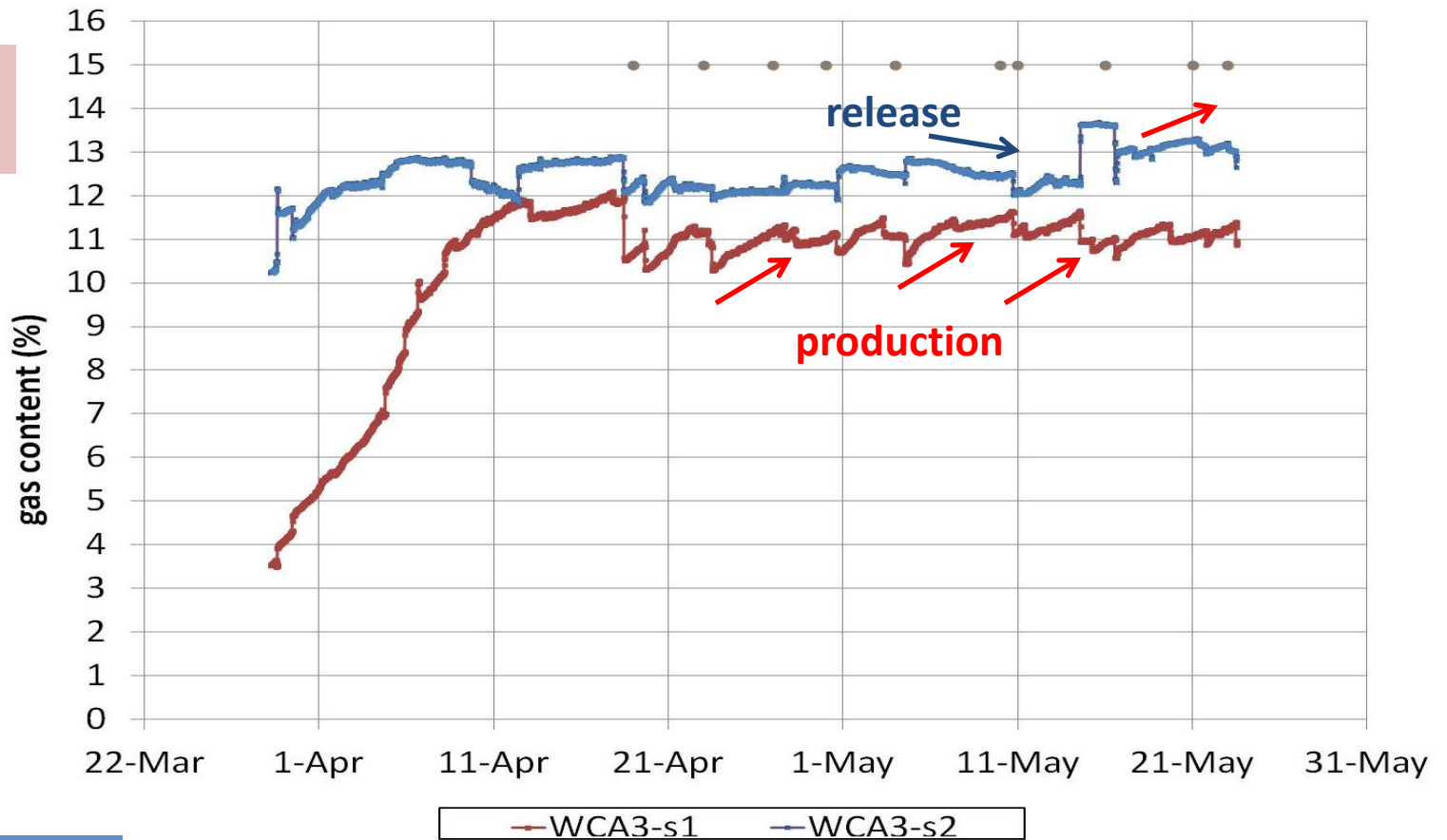
Sample	event	gas lost		production rate *		surface deformation (cm)
		(%)	(% day ⁻¹)	(mg CH ₄ m ⁻² day ⁻¹)	(mg CO ₂ m ⁻² day ⁻¹)	
WCA-1	A	1.35	0.23	227.33	104.20	1.60
	B	0.61	0.07	68.50	31.40	0.50
WCA-2	A	1.28	0.21	215.55	98.79	0.60
	B	1.00	0.05	45.94	21.06	1.03
	C	0.80	0.04	44.92	20.59	1.57

* assuming 60 % CH₄ and 10 % CO₂

GPR + surface deformation



Capacitance probes



Production

WCA3-s1:

148.5 mg CH₄m²day⁻¹

68.0 mg CO₂m²day⁻¹

WCA3-s2:

48.3 mg CH₄m²day⁻¹

22.0 mg CO₂m²day⁻¹

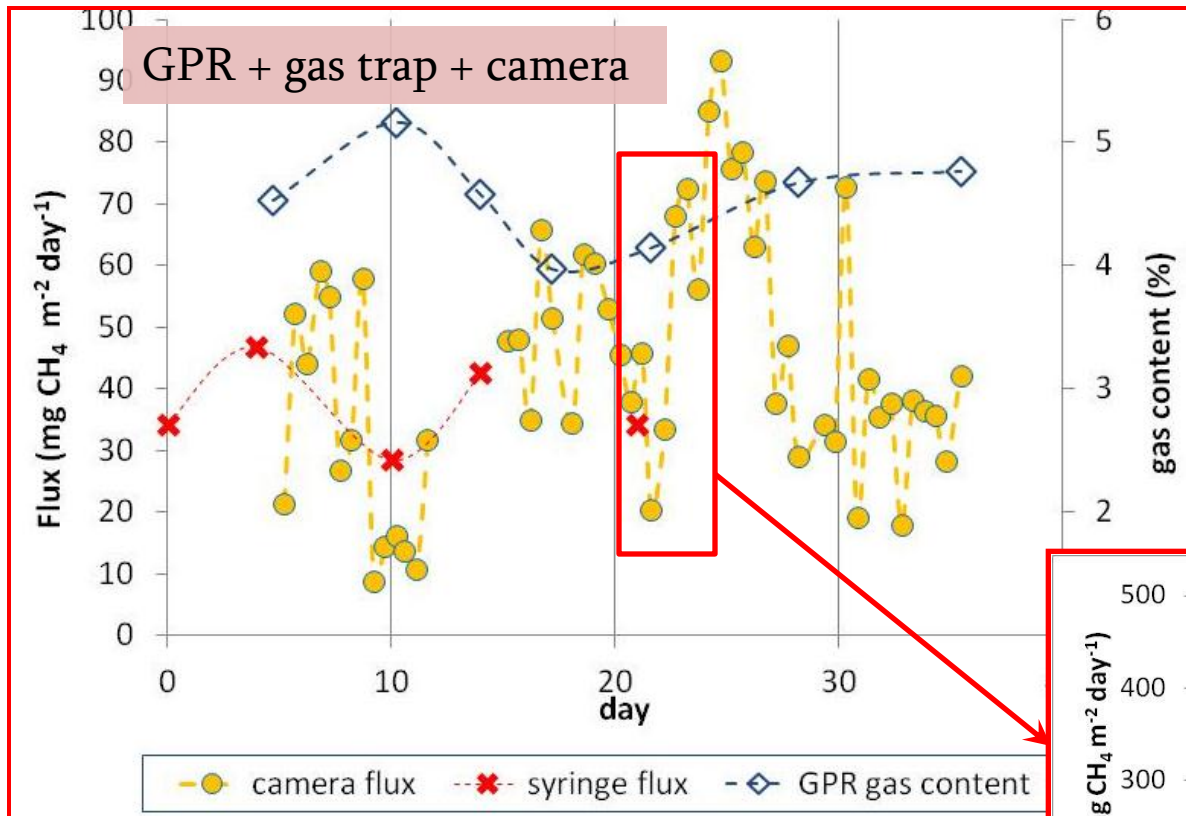
Release

WCA3-s2:

43.3 mg CH₄m²day⁻¹

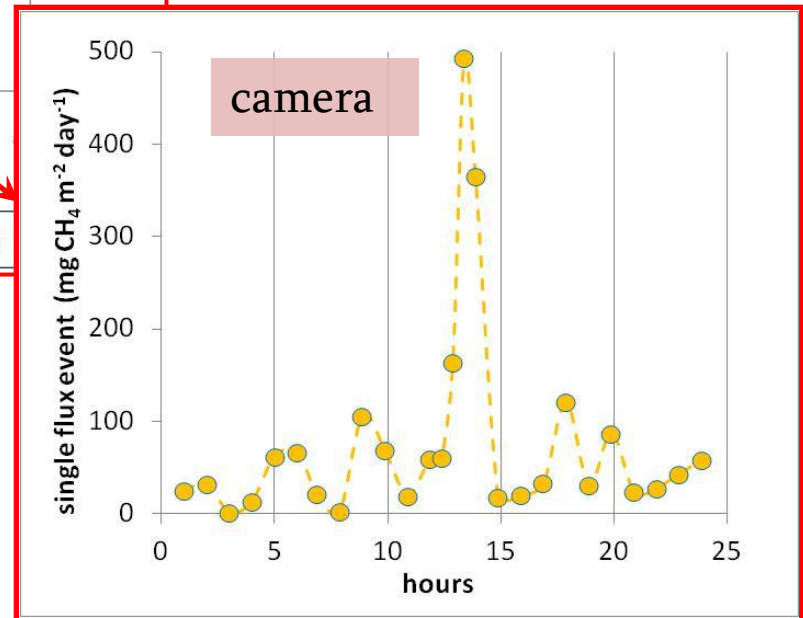
19.8 mg CO₂m²day⁻¹

■ b) Gas dynamics: steady vs. episodic ebullition



Episodic

Fluxes between 493-164 $\text{mg CH}_4 \text{ m}^{-2} \text{ day}^{-1}$ during 1.5 hours

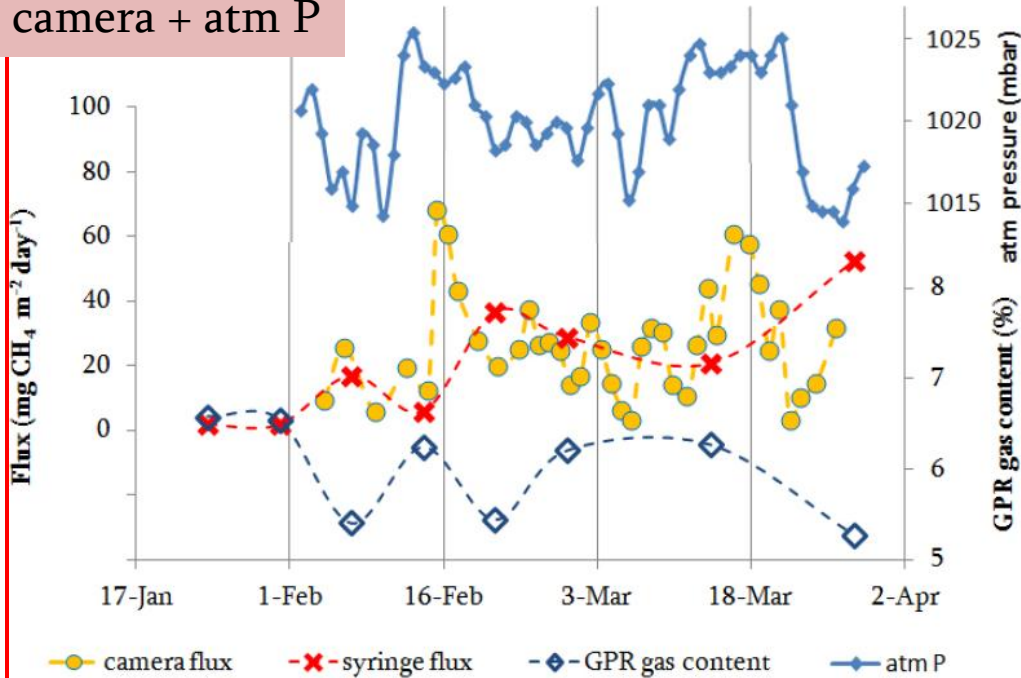


Fluxes averaging 44 $\text{mg CH}_4 \text{ m}^{-2} \text{ day}^{-1}$ during 30 days

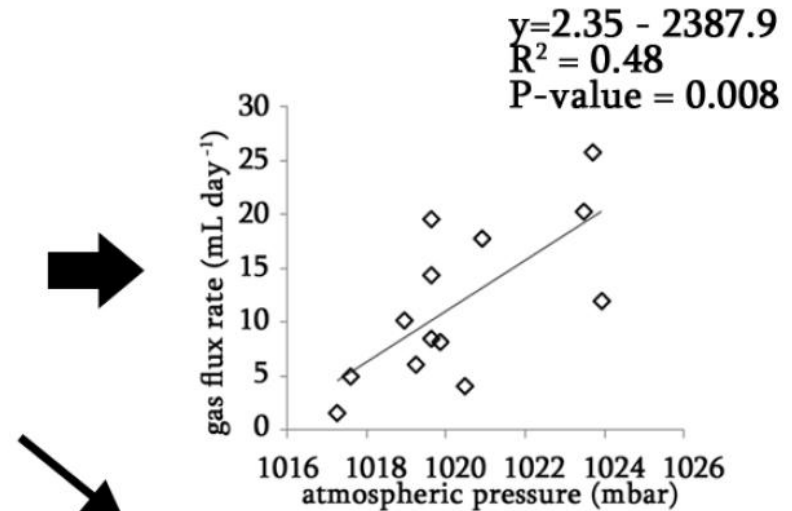
Steady

- c) Gas dynamics: ebullition and atmospheric pressure

GPR + flux +
camera + atm P



LILA-WCA1



tree island site
0.85 m peat column (H6-H8)
average porosity = 90%

Positive linear relationship between changes in gas content and changes in atm P
(i. e. ebullition events during high atm P events = volume decrease during high P = increased mobility)

4. Conclusions:

- Hydrogeophysical methods, mainly GPR and capacitance probes combined with gas traps and time-lapse cameras provide consistent information in peat soils of the Everglades as related to:
 - Peat thickness
 - Biogenic gas production and release
 - Ebullition events (differentiation of steady vs. episodic ebullition)
 - Correspondence of gas fluxes and changes in atmospheric pressure
- They allow for non-invasive (i.e. GPR and gas traps/time-lapse cameras) investigation of gas dynamics in peat soils
- They show promise for continuous and autonomous data acquisition beyond discrete measurements

5. Future directions

- Autonomous GPR measurements in the field

Caribou Bog, Maine



- Expanded discrete measurements for biogenic gas dynamics in the field

WCA3, Everglades



- Peat thickness characterization in the field at larger scales

LILA, WCA1, Everglades



Thanks to:

Funding:

- USGS (Greater Everglades Priority Ecosystem Science)
- South Florida Management District

Individuals:

- Eric Cline,
David Sumner;
Marc Royer;
Greg Mount;
Tyler McNaab;
Anastasia Cabolova;
Diego Quiros;
Tyler Beck;
Bryan Botson;
Dale Gawlik;
Len Berry;
Ronnie Best

